

# LYNN LAKE AREA

GENERALIZED INTERPRETATION FROM MAGNETICS & GEOLOGY

## RELATIVE MAGNETIC HIGHS

- I - MAFIC VOLCANICS WITH LOCAL MAGNETITE RICH ZONES AND/OR GABBROIC SILLS, OR MAGNETIC CONGLOMERATE
- II,III - MAFIC VOLCANICS WITH LOCAL GABBRO
- IV,VII - Fe FORMATION
- V - GABBRO
- VI - MAFIC VOLCANICS AND COARSE-GRAINED SEDIMENTS

## RELATIVE MAGNETIC LOWS

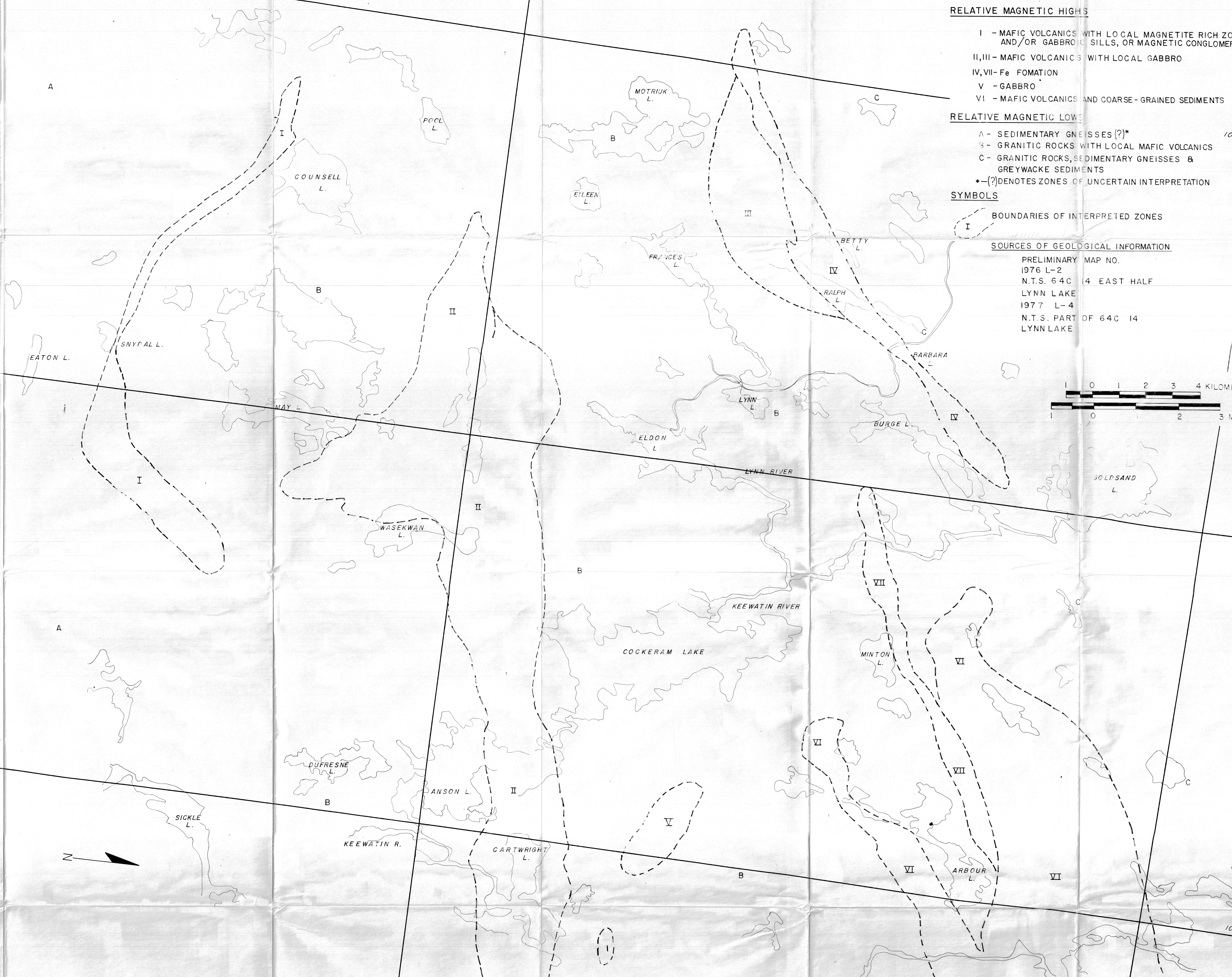
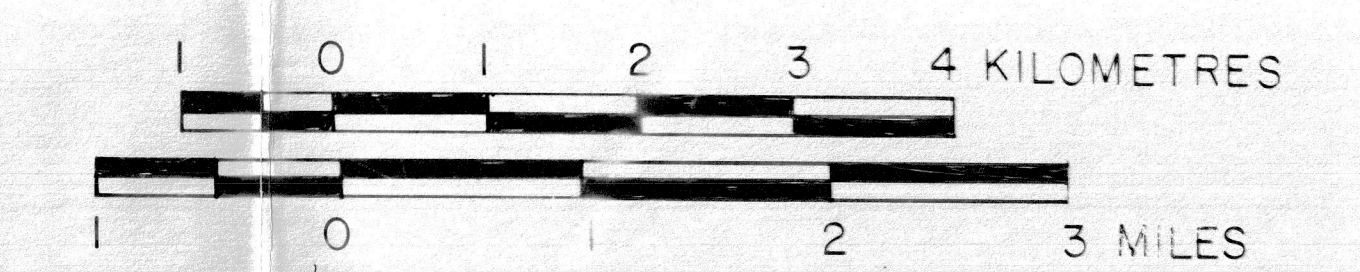
- A - SEDIMENTARY GNEISSES (?)\*
- B - GRANITIC ROCKS WITH LOCAL MAFIC VOLCANICS
- C - GRANITIC ROCKS, SEDIMENTARY GNEISSES & GREYWACKE SEDIMENTS
- \*-(?) DENOTES ZONES OF UNCERTAIN INTERPRETATION

## SYMBOLS

BOUNDARIES OF INTERPRETED ZONES

## SOURCES OF GEOLOGICAL INFORMATION

PRELIMINARY MAP NO.  
1976 L-2  
N.T.S. 64C 14 EAST HALF  
LYNN LAKE  
1977 L-4  
N.T.S. PART OF 64C 14  
LYNN LAKE



56° 45'

57° 00'

101° 15'

101° 00'

101° 45'